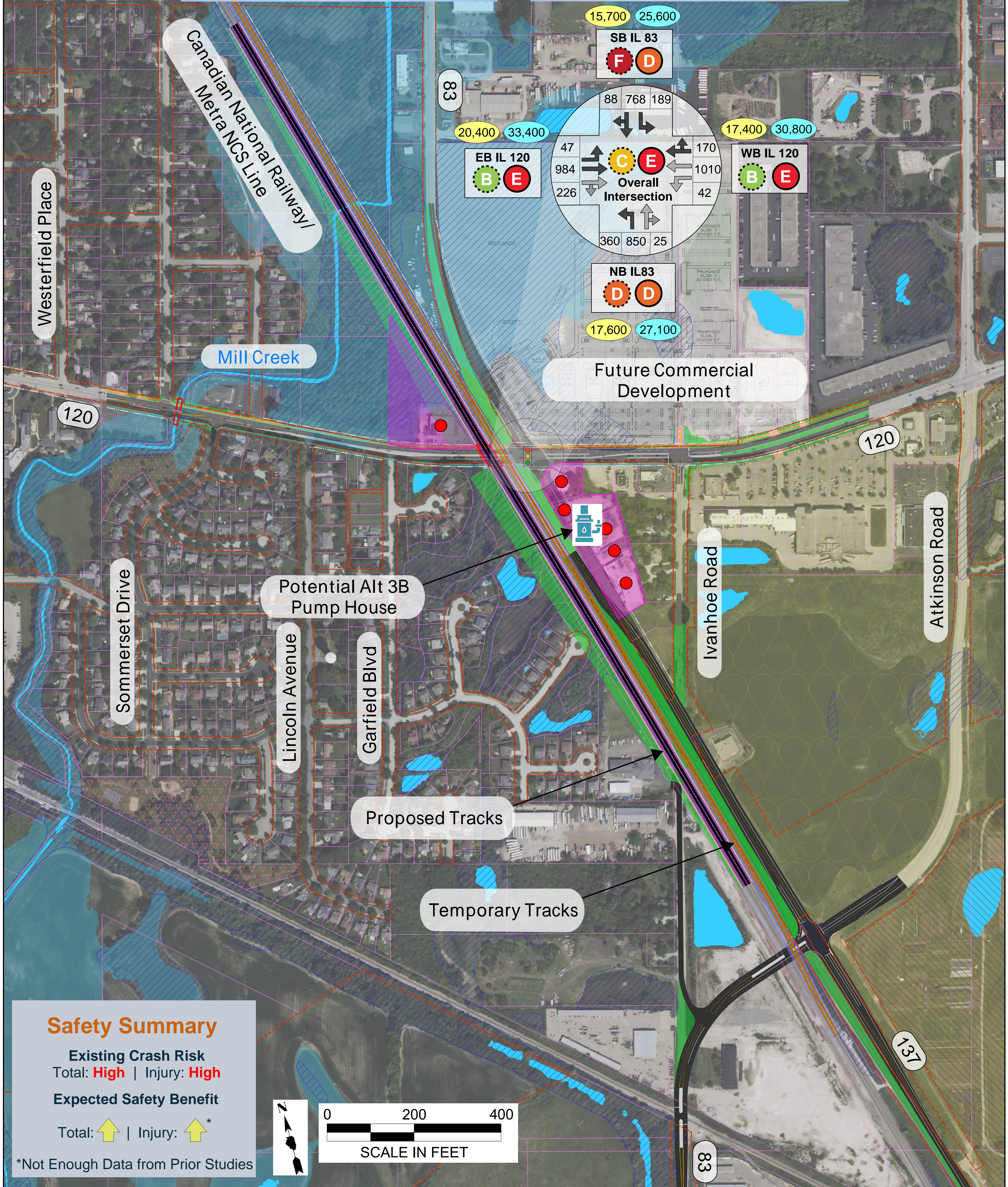


Alternative 3A & 3B: Grade Separate Railroad Tracks with IL 120 (Tracks are Raised or Lowered, IL 120 and IL 83 Remain at Grade)



Safety Summary

Existing Crash Risk
Total: **High** | Injury: **High**

Expected Safety Benefit

Total: **↑** | Injury: **↑***

*Not Enough Data from Prior Studies



Notes:

1. Traffic Volumes Shown are Build (2050) Counts
2. Tracks Shown are for Overpass, Underpass Extends 900 Feet Further Each Direction.
3. See Roll Plots for Legend