

Illinois Department of Transportation

IL120 STUDY

IL60 to Almond Road

WELCOME

Thank you for visiting the Illinois Department of Transportation's Public Information Meeting for the **Illinois 120 PEL Study**. We appreciate you taking time to learn more about this study and provide input.

WE HOPE YOU WILL:



Sign-in



Watch the Presentation



Take a Look at the Exhibits



Ask Questions!



Provide Feedback

WHAT YOU WILL LEARN ABOUT:



About the Study



Study Area



Existing Conditions



Ideas for Improvement



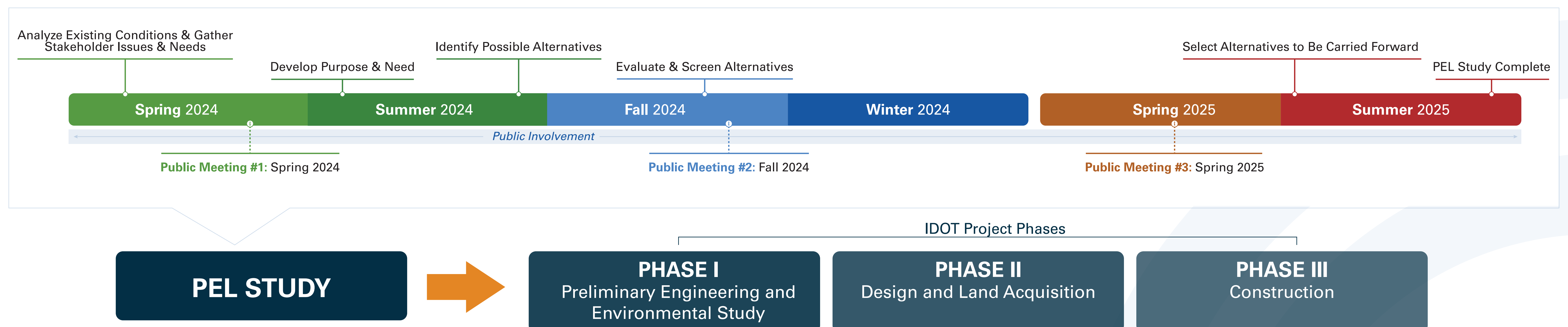
ABOUT THE STUDY

A **Planning and Environmental Linkages Study** or **PEL** is a planning study that provides for:

- A collaborative approach to decision-making
- Early consideration of:
 - Environmental issues
 - Community context
 - Economic or development goals
- Incorporation of information, analysis, and planning results into environmental review

A PEL will be conducted to enable the following planning products to be adopted into later environmental review processes:

- Approved purpose and need
- Screening of alternatives
- Basic description of the environmental setting
- Decision on methodologies for analysis



LOCATION MAP



The **project study area** for the PEL is along Illinois Route 120 (IL 120) aka Belvidere Road from west of Illinois Route 60 to east of Almond Road, approximately 9 miles.

GOALS & OBJECTIVES

Through stakeholder, agency, and public input, the Study Team seeks to establish a shared corridor vision and identify a range of alternatives that will:



Increase safety for all roadway users



Reduce congestion and delays as population grows



Provide pedestrian and bicycle connectivity

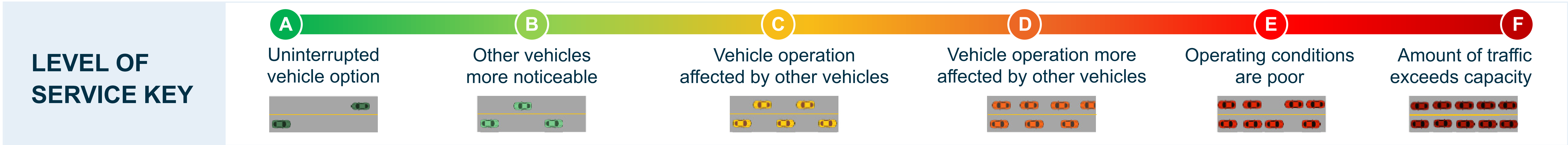
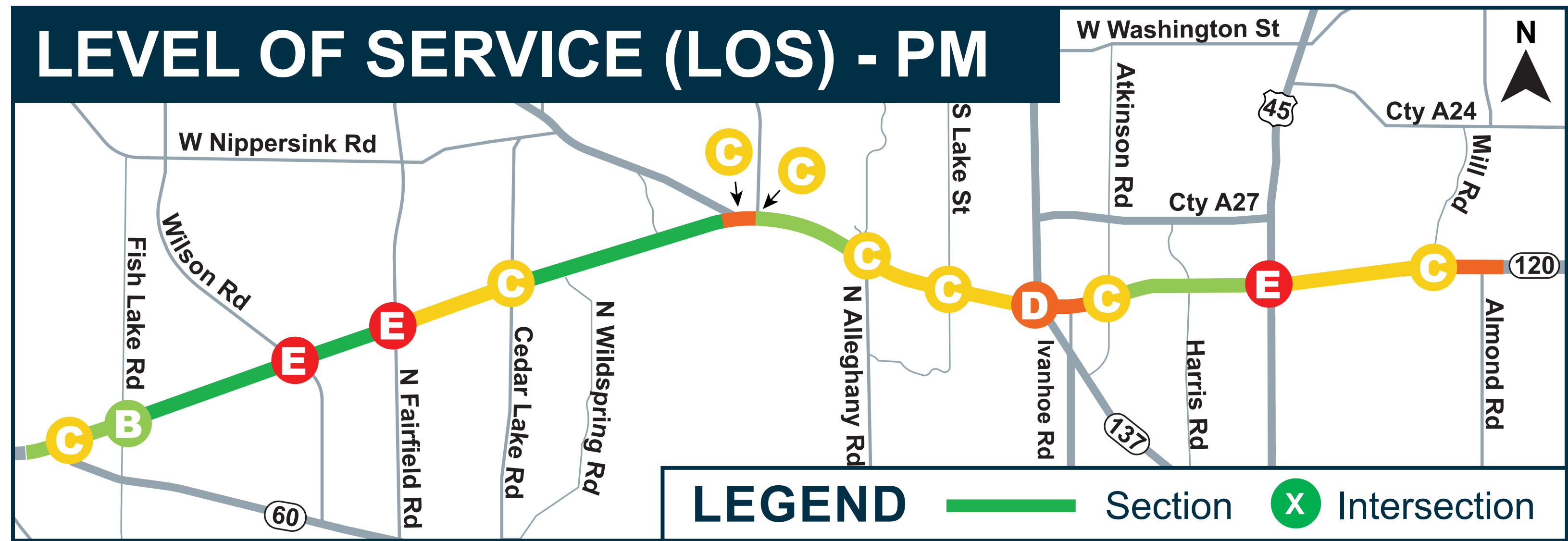
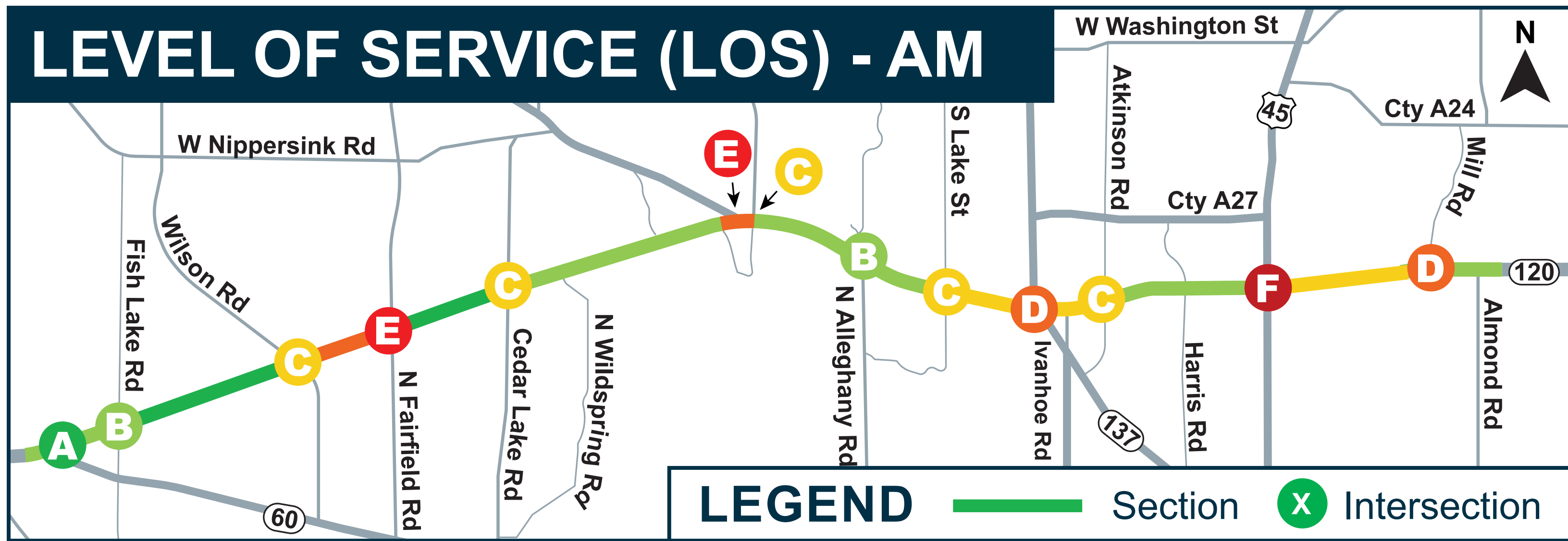
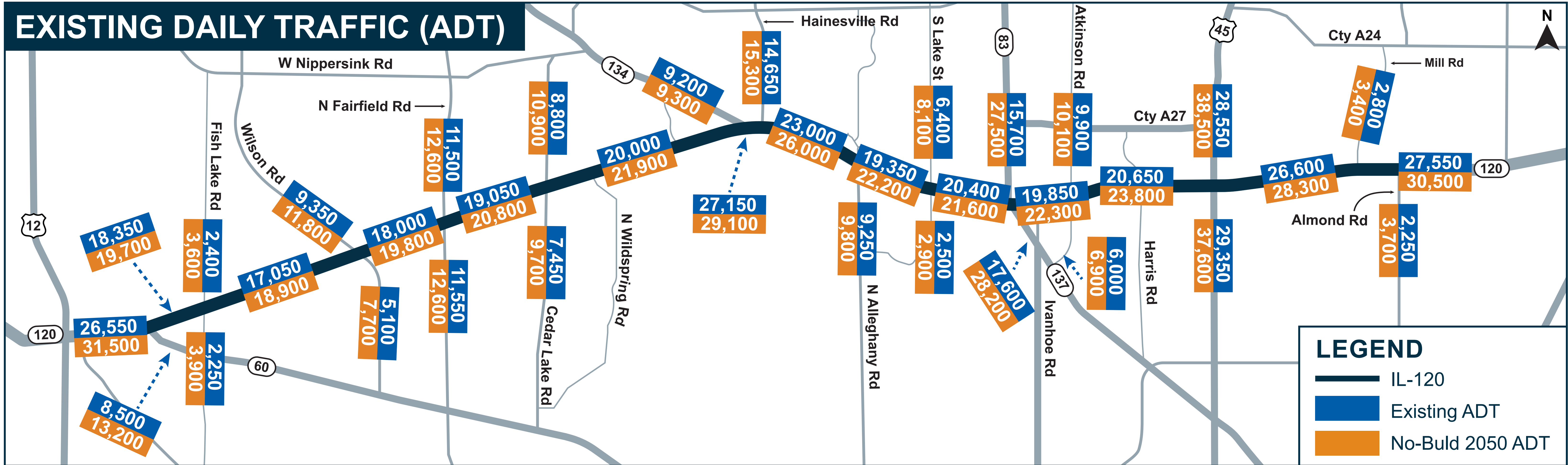


Accommodate future regional transportation improvements

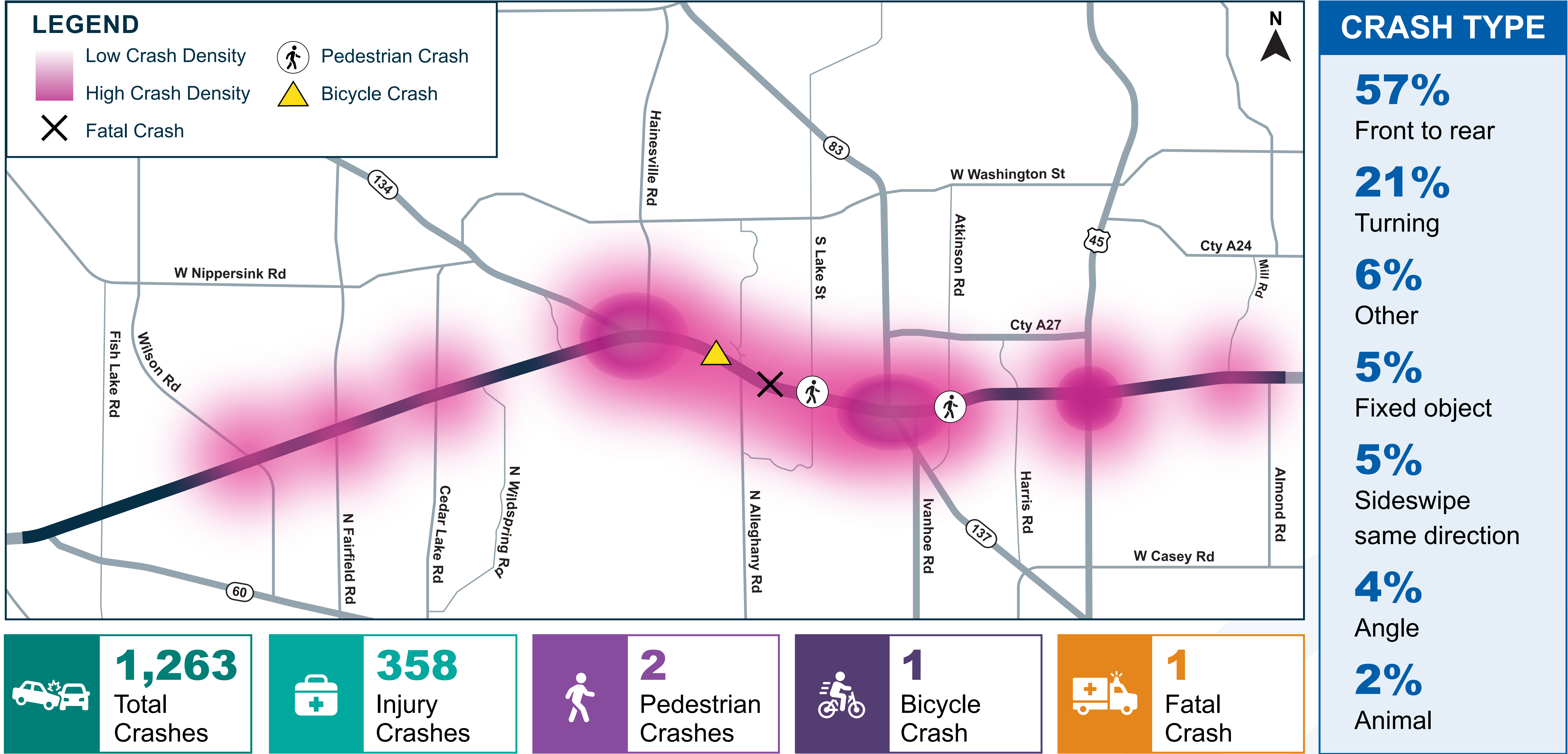


Minimize impacts to environmental resources

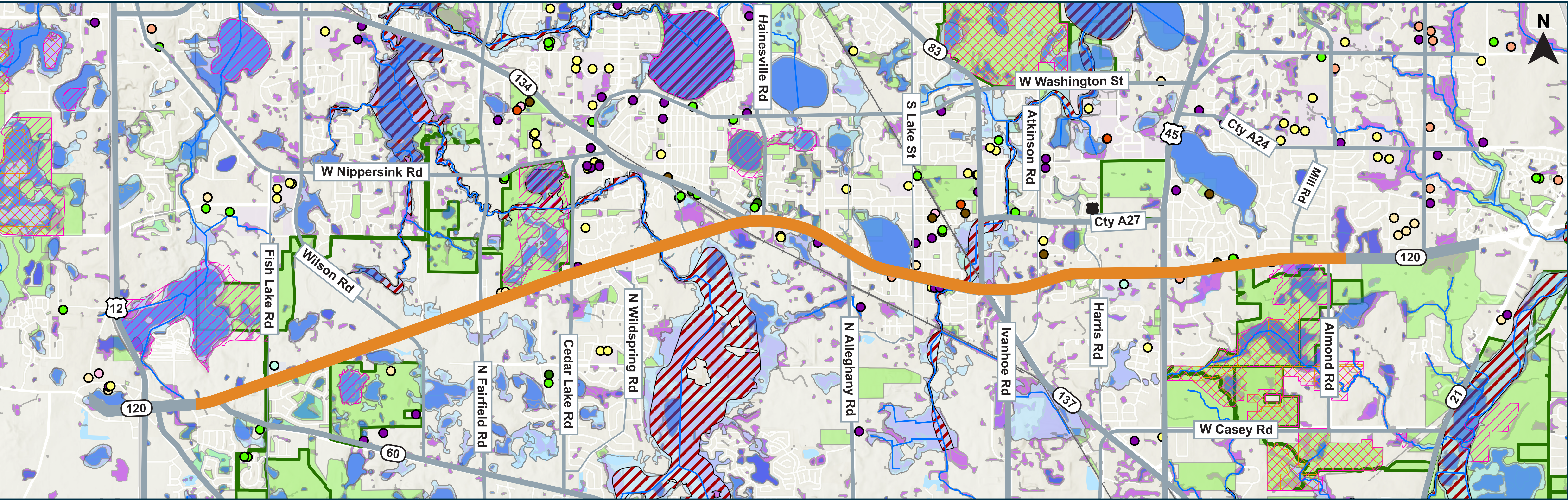
TRAFFIC DATA



ALL CRASHES - 2017 TO 2021



ENVIRONMENTAL RESOURCES



— Study Corridor

○ Cemetery

● Community/Recreation Center

○ Hospital/Medical Center

● House of Worship

● Law Enforcement

● Library

● Municipal Government Facility

○ Museum

● School

○ Senior Facility

□ Forest Preserves

■ Parks and Open Space

□ Floodplain

▨ Floodway

■ Waterbody

■ Mapped Wetlands

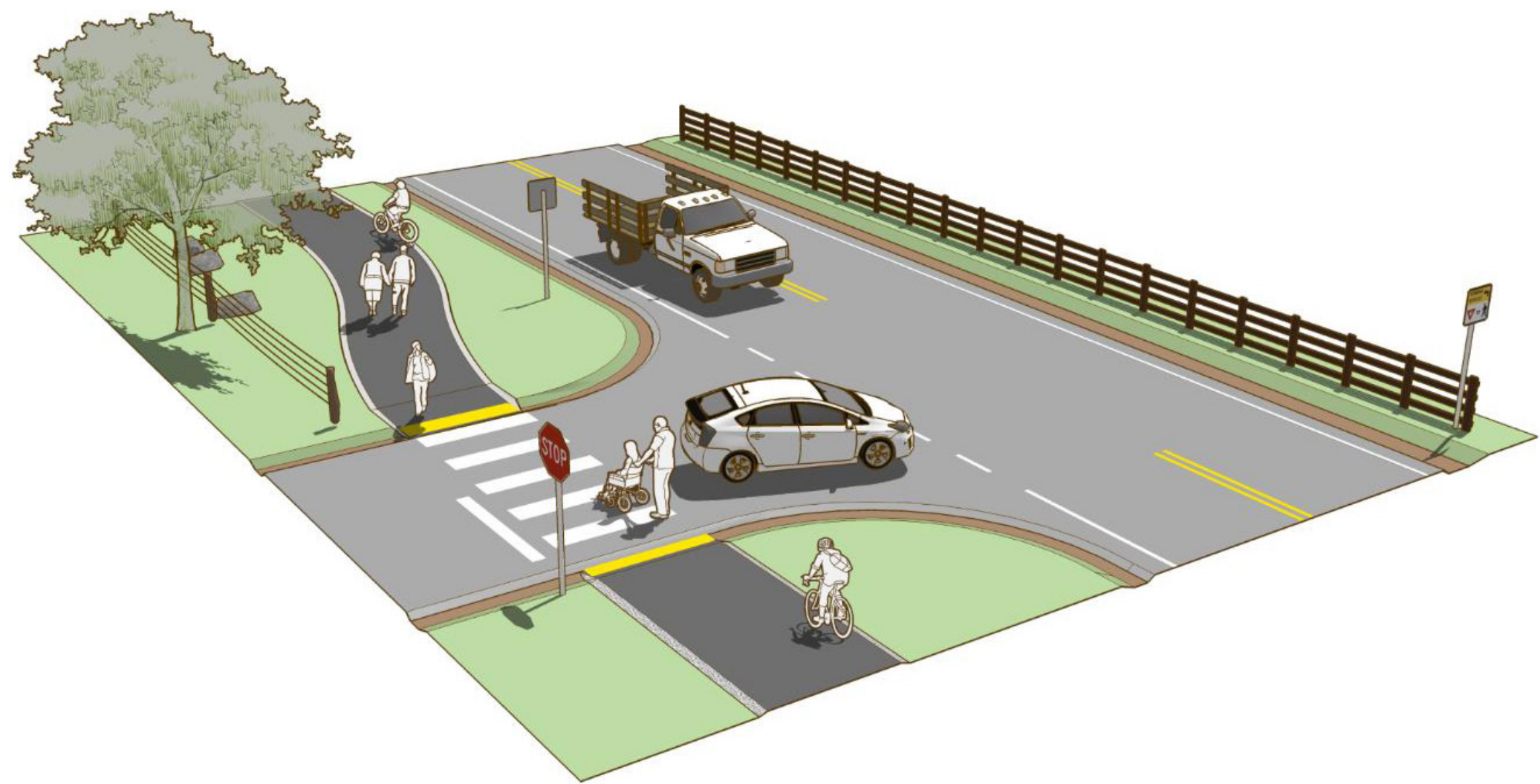
⚡ Railroad

▨ Illinois Nature Preserves Commission Site

▨ Illinois Natural Areas Inventory Site

Connect@IL120Study.com | IL120Study.com

NON-MOTORIZED USERS

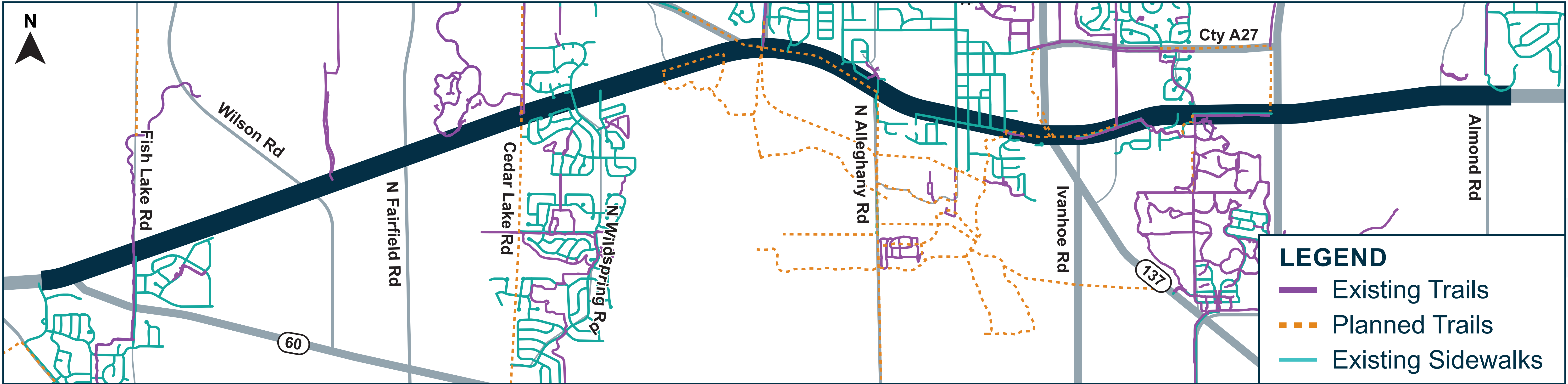


A **shared-use path** can be provided for a safe route for pedestrians, cyclists, and other non-motorized users.



A **sidewalk** can provide dedicated space for pedestrians that is safe, comfortable, and accessible.

Source: Small Town and Rural Design Guide Facilities for Walking and Biking



WANT TO BE INVOLVED?

- **Attend Public Meetings**

- Fill out comment form tonight
- Additional public meetings are anticipated:
 - Fall 2024
 - Spring 2025

- **Fill out Community Context Audit Form**

- Helps to define the purpose and need of the study based upon community goals and local plans for future development
- Takes into account the community's history and present and future conditions
- Considers factors such as mobility and access, safety, economics, aesthetics, and overall quality of life

- **Join Community Advisory Group (CAG)**

- Comprised of:
 - Community leaders
 - Homeowners
 - Business owners
 - Individuals representing special interest groups
- Members of the CAG:
 - Provide insight into community issues and concerns
 - Identify potential solutions for the transportation needs within their community
 - Meet during the day for two hours

We want to hear from you about transportation and community needs in this area!
The comment period is open **APRIL 23 – MAY 24, 2024.**

 **Fill Out a Comment Form**

.....

 **Complete the Community
Context Audit Form**


.....

 **Apply to Join the Community
Advisory Group**

.....

 **By Email:** Connect@IL120Study.com

.....

 **By Mail:** Illinois Department of Transportation
201 W. Center Court
Schaumburg, IL 60196-1096
Attn: Bureau of Programming
Corey Smith, P.E.

Scan the QR code or
visit IL120Study.com to
view public information
meeting materials or for
more information.

