

Illinois Department of Transportation

# IL120 STUDY

IL60 to Almond Road

# WELCOME

Thank you for visiting the Illinois Department of Transportation's Public Information Meeting for the **Illinois 120 PEL Study**. We appreciate you taking time to learn more about this study and provide input.

## WE HOPE YOU WILL:



Sign-in



Watch the Presentation



Take a Look at the Exhibits



Ask Questions!



Provide Feedback

## WHAT YOU WILL LEARN ABOUT:



About the Study



Study Area



Existing Conditions



Ideas for Improvement



# ABOUT THE STUDY

A **Planning and Environmental Linkages Study** or **PEL** is a planning study that provides for:

- A collaborative approach to decision-making
- Early consideration of:
  - Environmental issues
  - Community context
  - Economic or development goals
- Incorporation of information, analysis, and planning results into environmental review

A PEL will be conducted to enable the following planning products to be adopted into later environmental review processes:

- Approved purpose and need
- Screening of alternatives
- Basic description of the environmental setting
- Decision on methodologies for analysis



# LOCATION MAP



The **project study area** for the PEL is along Illinois Route 120 (IL 120) aka Belvidere Road from west of Illinois Route 60 to east of Almond Road, approximately 9 miles.

# GOALS & OBJECTIVES

Through stakeholder, agency, and public input, the Study Team seeks to establish a shared corridor vision and identify a range of alternatives that will:



Increase safety for all roadway users



Reduce congestion and delays as population grows



Provide pedestrian and bicycle connectivity

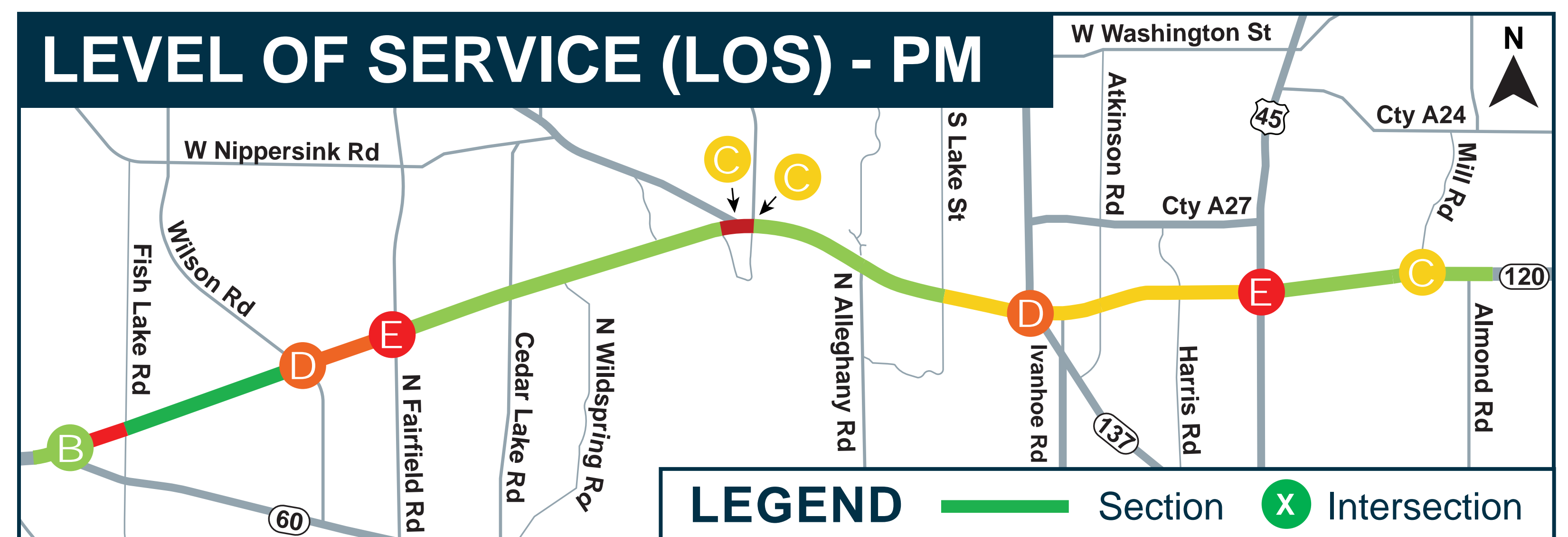
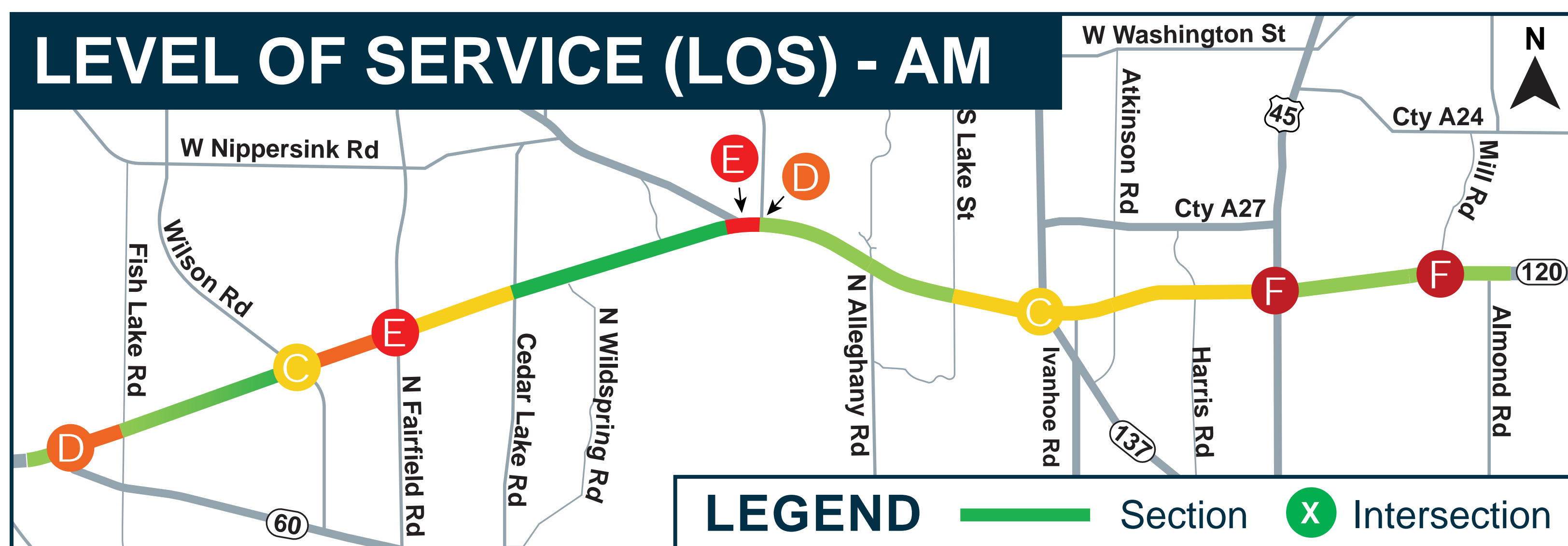


Accommodate future regional transportation improvements

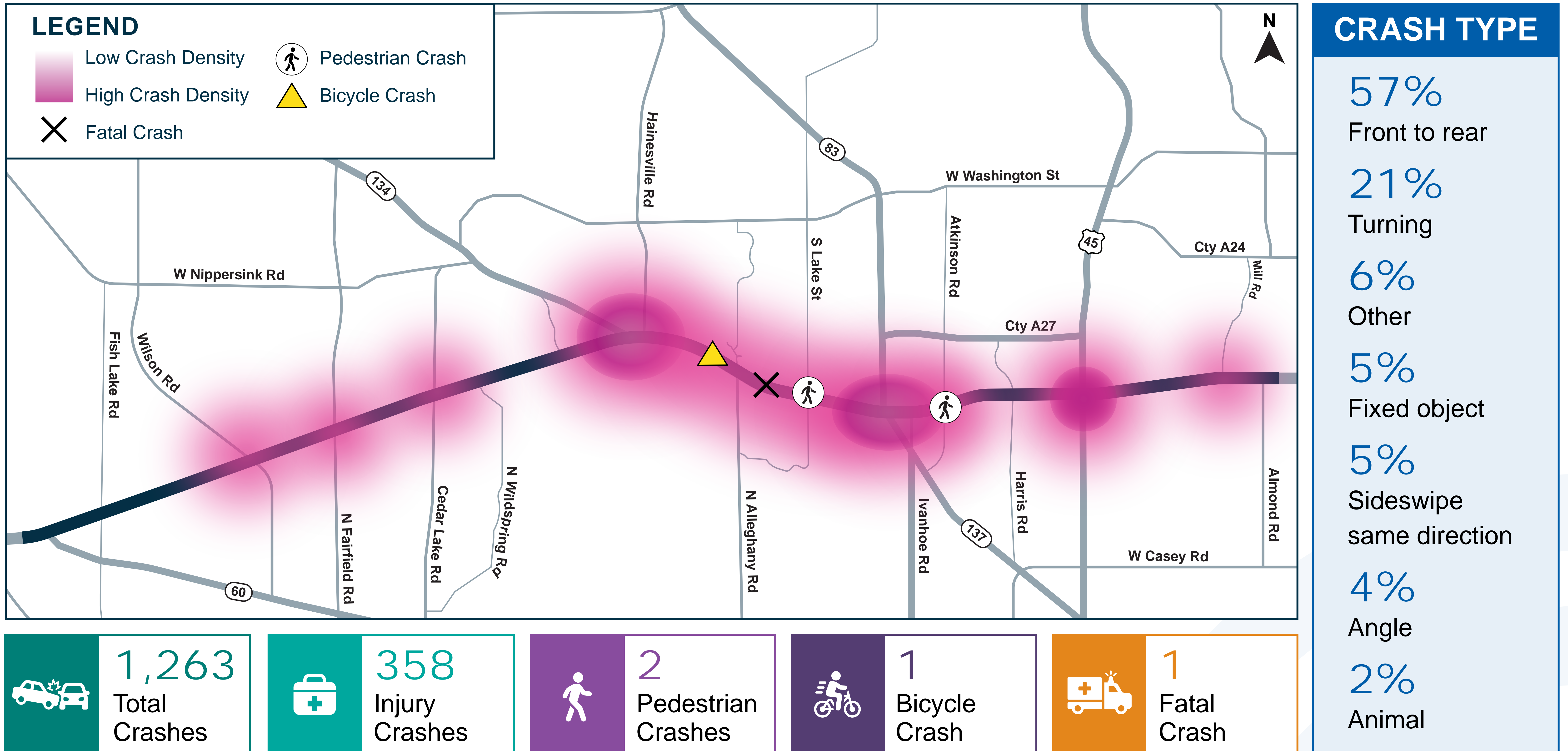


Minimize impacts to environmental resources

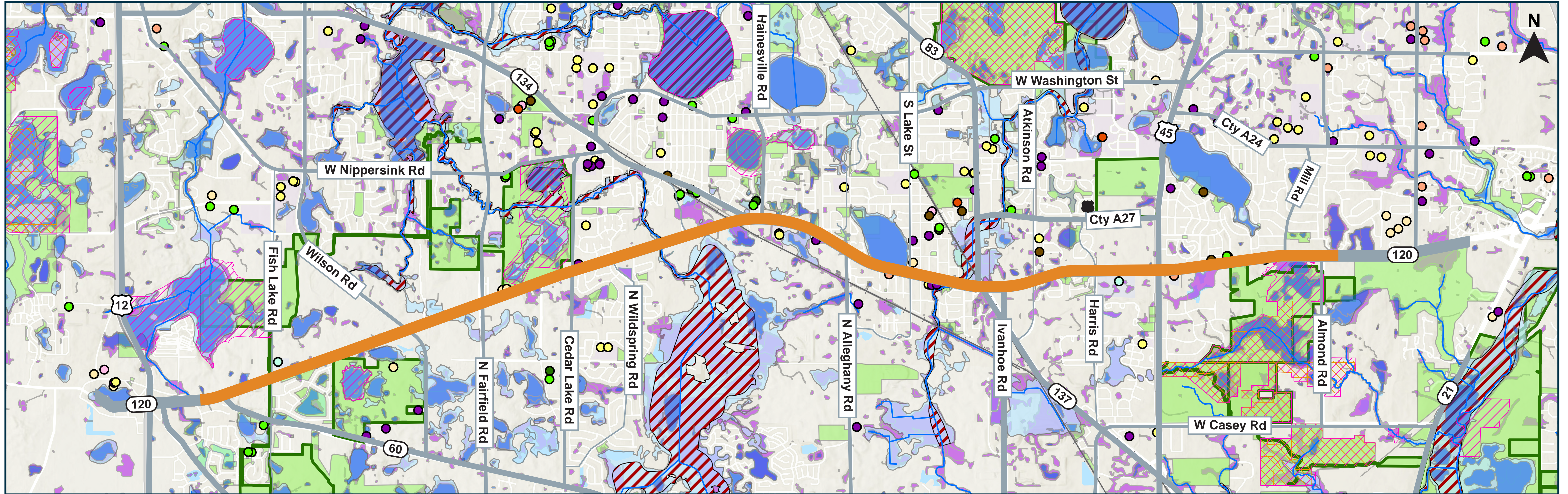
# TRAFFIC DATA



# ALL CRASHES - 2017 TO 2021

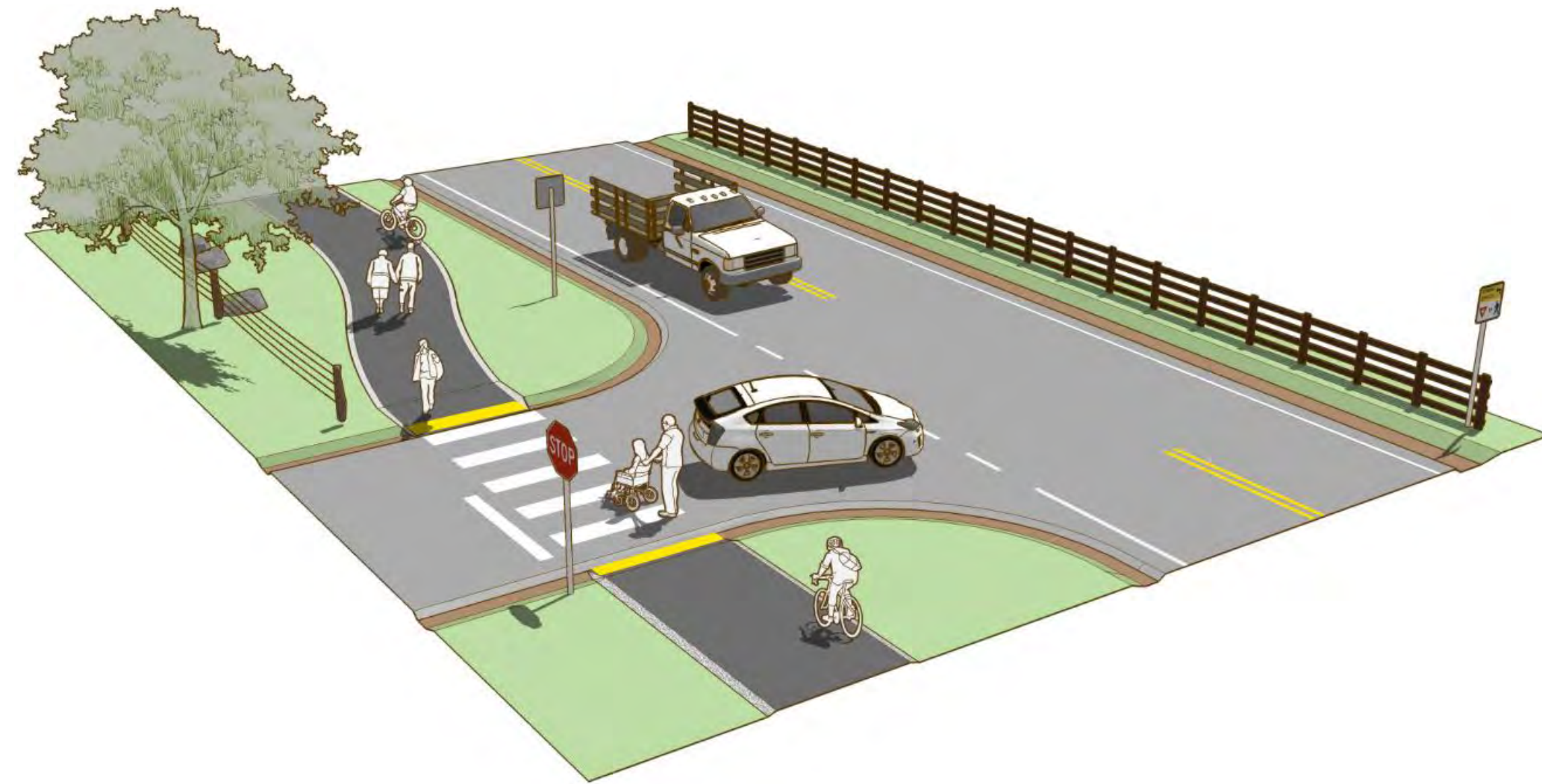


# ENVIRONMENTAL RESOURCES



- Study Corridor
- Cemetery
- Community/Recreation Center
- Hospital/Medical Center
- House of Worship
- Law Enforcement
- Library
- Municipal Government Facility
- Museum
- School
- Senior Facility
- Forest Preserves
- Parks and Open Space
- Floodplain
- Floodway
- Waterbody
- Mapped Wetlands
- Railroad
- Illinois Nature Preserves Commission Site
- Illinois Natural Areas Inventory Site

# NON-MOTORIZED USERS

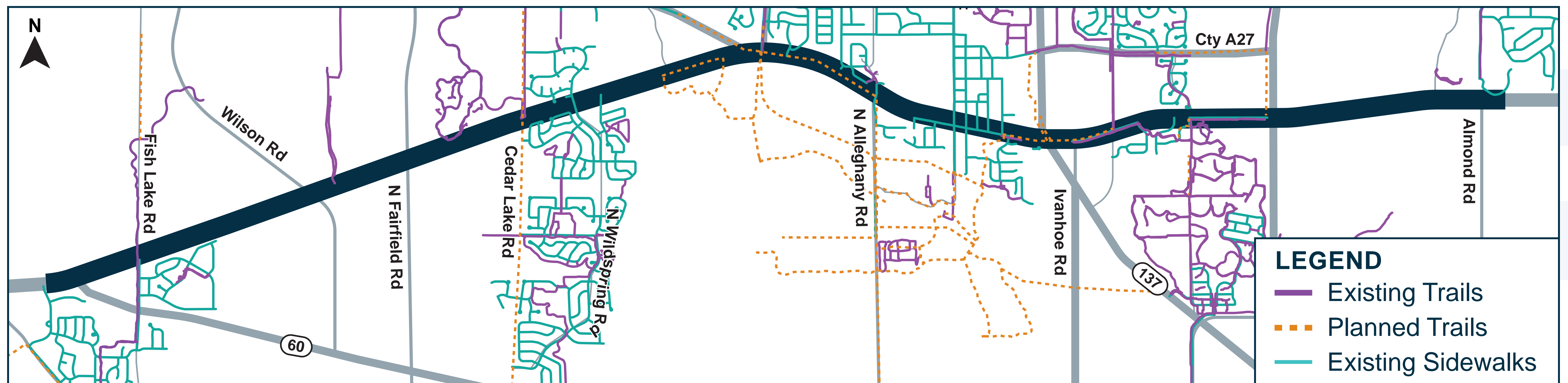


A **shared-use path** can be provided for a safe route for pedestrians, cyclists, and other non-motorized users.



A **sidewalk** can provide dedicated space for pedestrians that is safe, comfortable, and accessible.

Source: Small Town and Rural Design Guide Facilities for Walking and Biking





# WANT TO BE INVOLVED?

- **Attend Public Meetings**
  - Fill out comment form tonight
  - Additional public meetings are anticipated:
    - Fall 2024
    - Spring 2025
- **Fill out Community Context Audit Form**
  - Helps to define the purpose and need of the study based upon community goals and local plans for future development
  - Takes into account the community's history and present and future conditions
  - Considers factors such as mobility and access, safety, economics, aesthetics, and overall quality of life
- **Join Community Advisory Group (CAG)**
  - Comprised of:
    - Community leaders
    - Homeowners
    - Business owners
    - Individuals representing special interest groups
  - Members of the CAG:
    - Provide insight into community issues and concerns
    - Identify potential solutions for the transportation needs within their community
    - Meet during the day for two hours

# IL120STUDY

IL60 to Almond Road

We want to hear from you about transportation and community needs in this area!  
The comment period is open **APRIL 23 – MAY 24, 2024.**



**Fill Out a Comment Form**

---



**Complete the Community  
Context Audit Form**

---



**Apply to Join the Community  
Advisory Group**

---



**By Email:** [Connect@IL120Study.com](mailto:Connect@IL120Study.com)

---



**By Mail:** Illinois Department of Transportation  
201 W. Center Court  
Schaumburg, IL 60196-1096  
Attn: Bureau of Programming  
Corey Smith, P.E.

Scan the QR code or  
visit [IL120Study.com](https://IL120Study.com) to  
view public information  
meeting materials or for  
more information.

